



America's Boating Club of Deception Pass

Princess Louisa 2024

Overview

Instructor: Jerry Liggett

EMAIL: jliggett4@hotmail.com

For Boaters, By Boaters™



Americas Boating Club Princess Louisa 2024

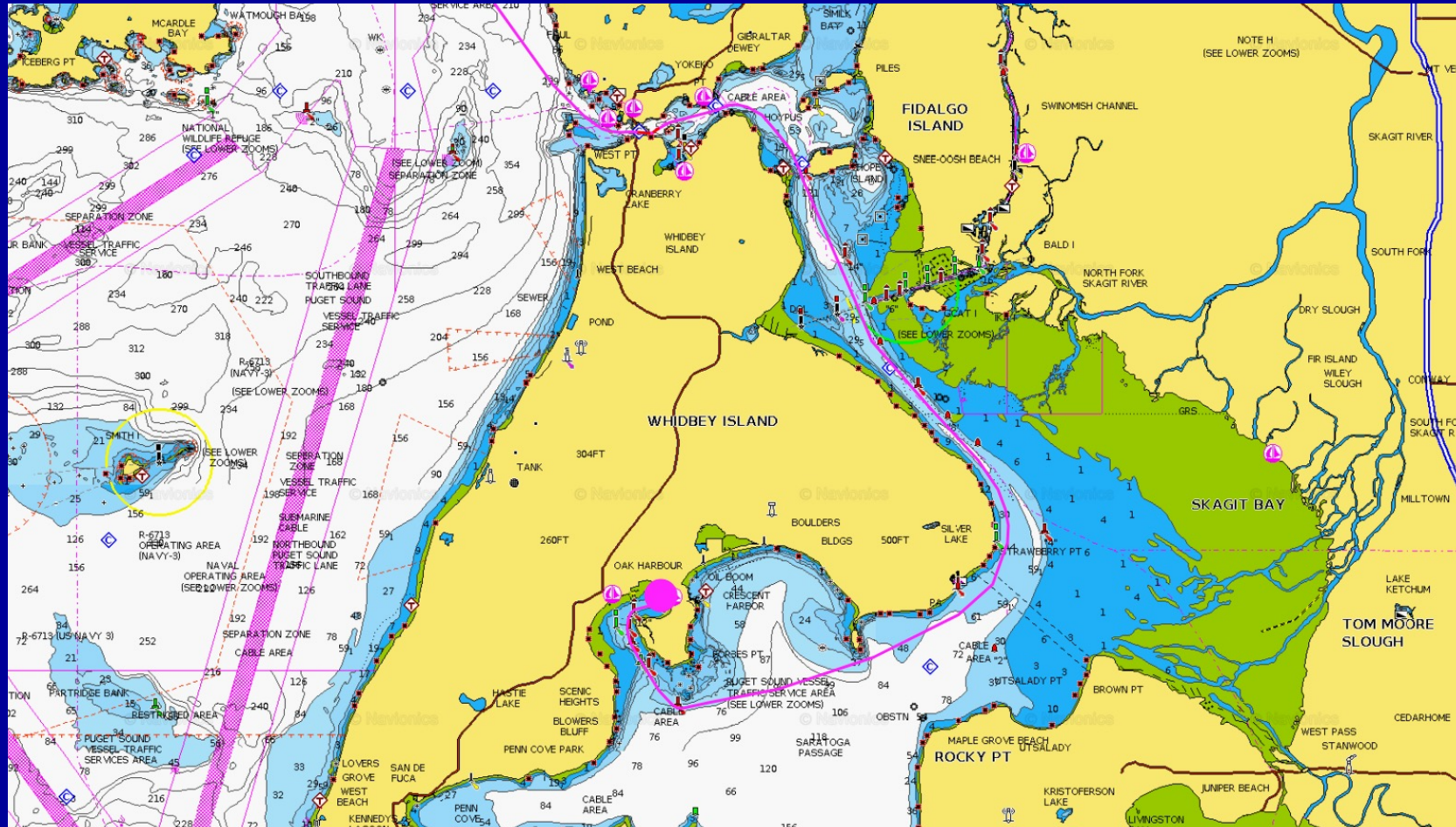
Getting Started



For Boaters, By Boaters™



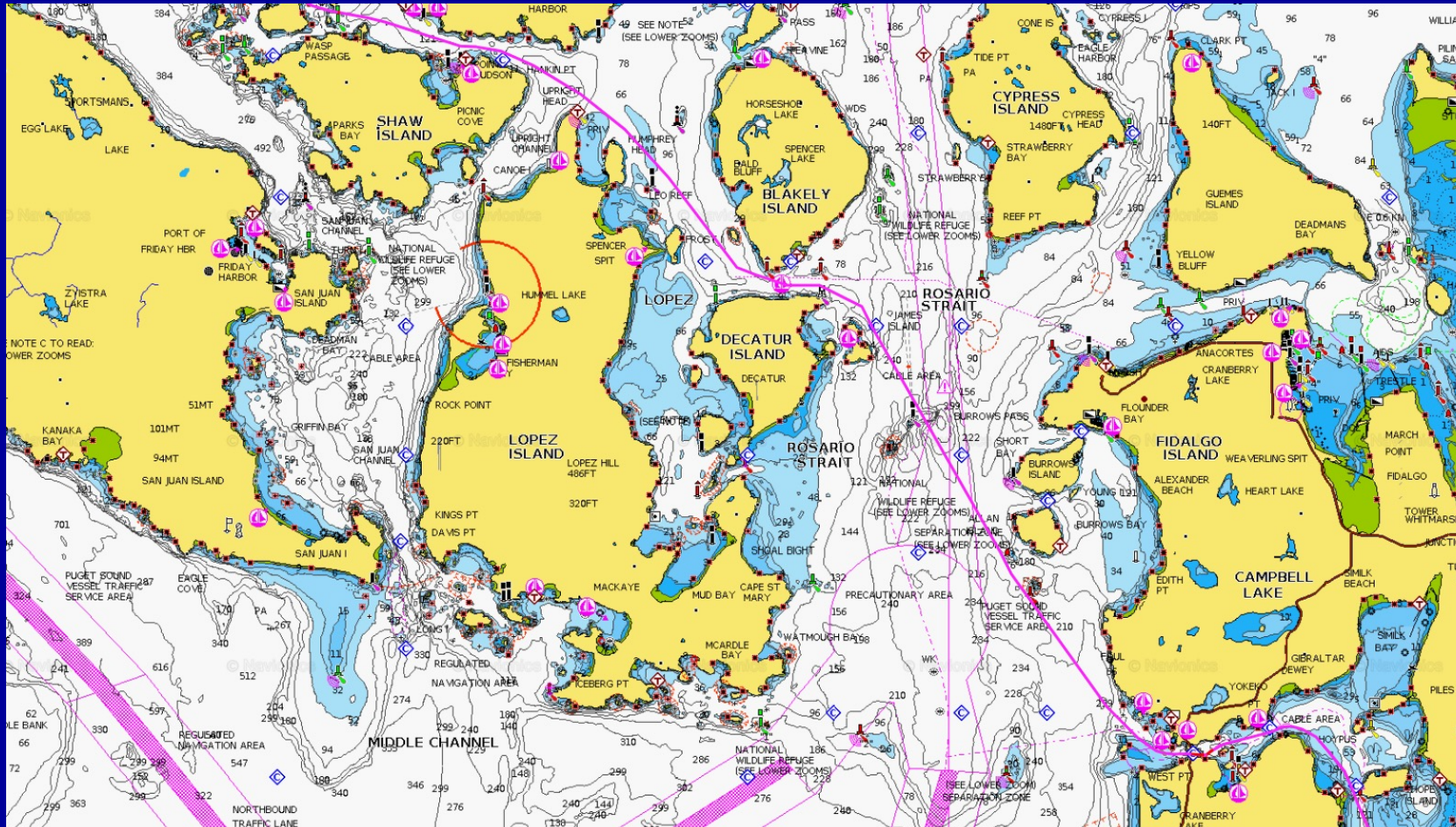
Princess Louisa 2024 Leg 1



For Boaters, By Boaters™



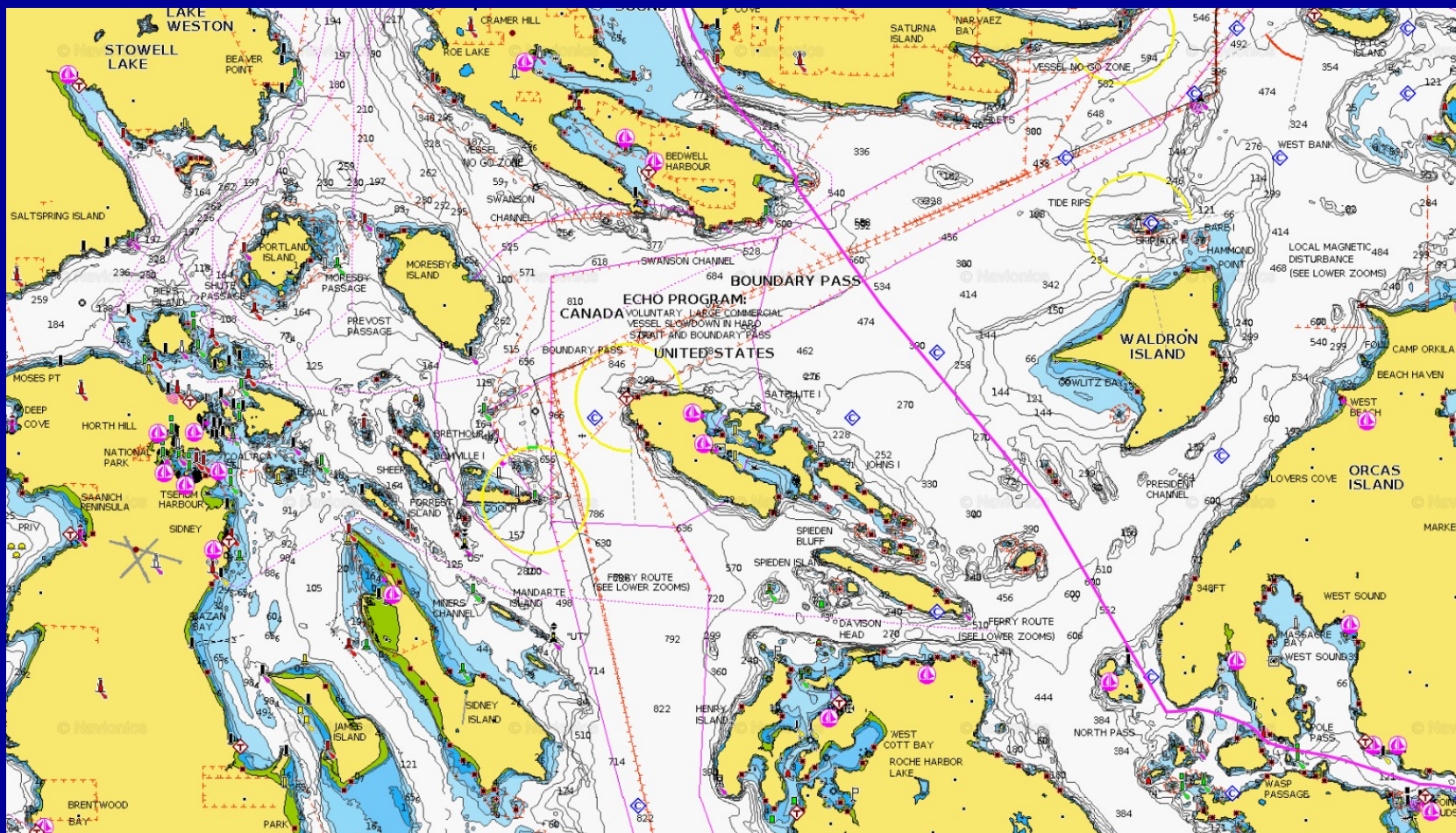
Princess Louisa 2024 Leg 2



For Boaters, By Boaters™



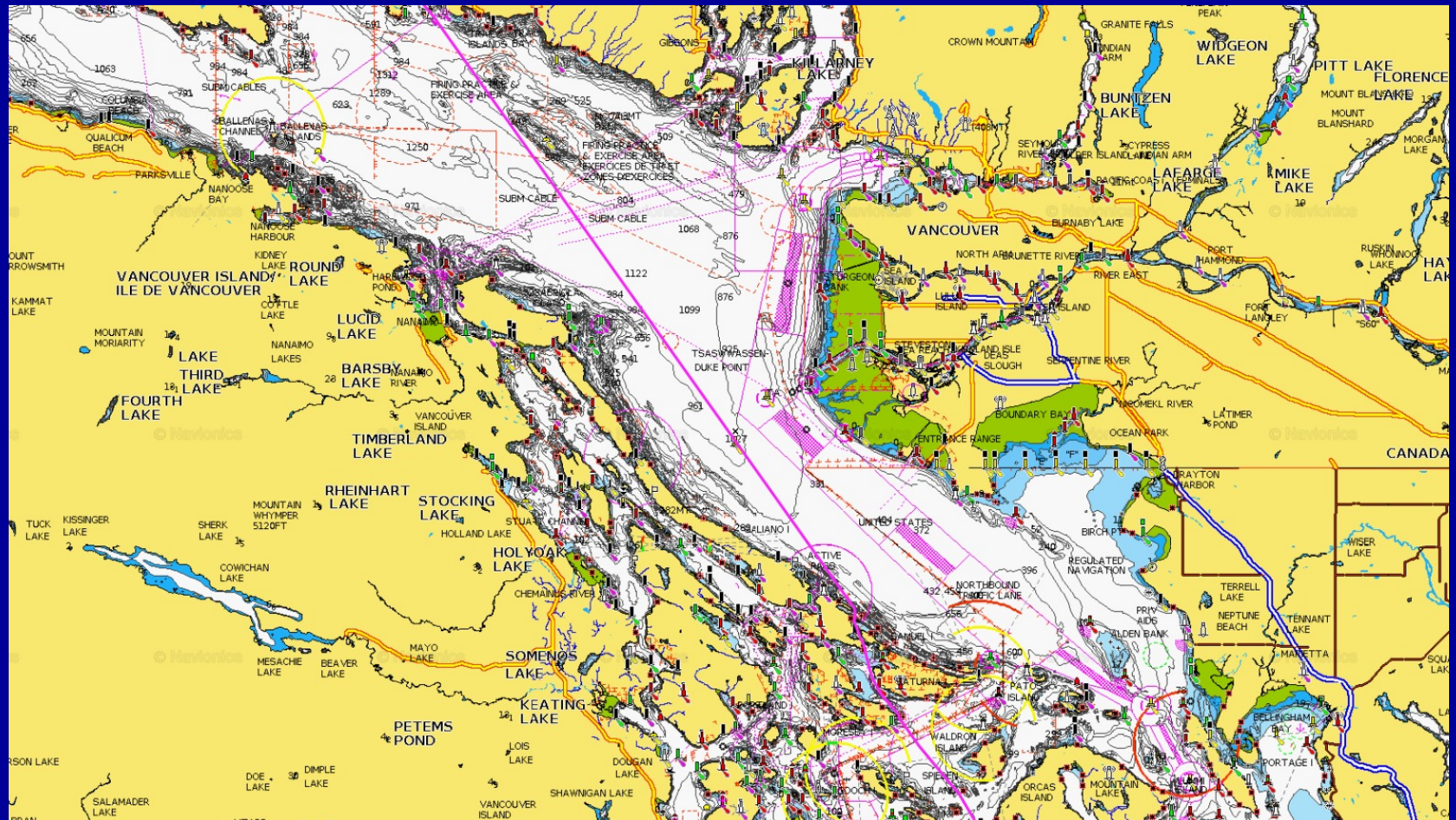
Leg 3



For Boaters, By Boaters™



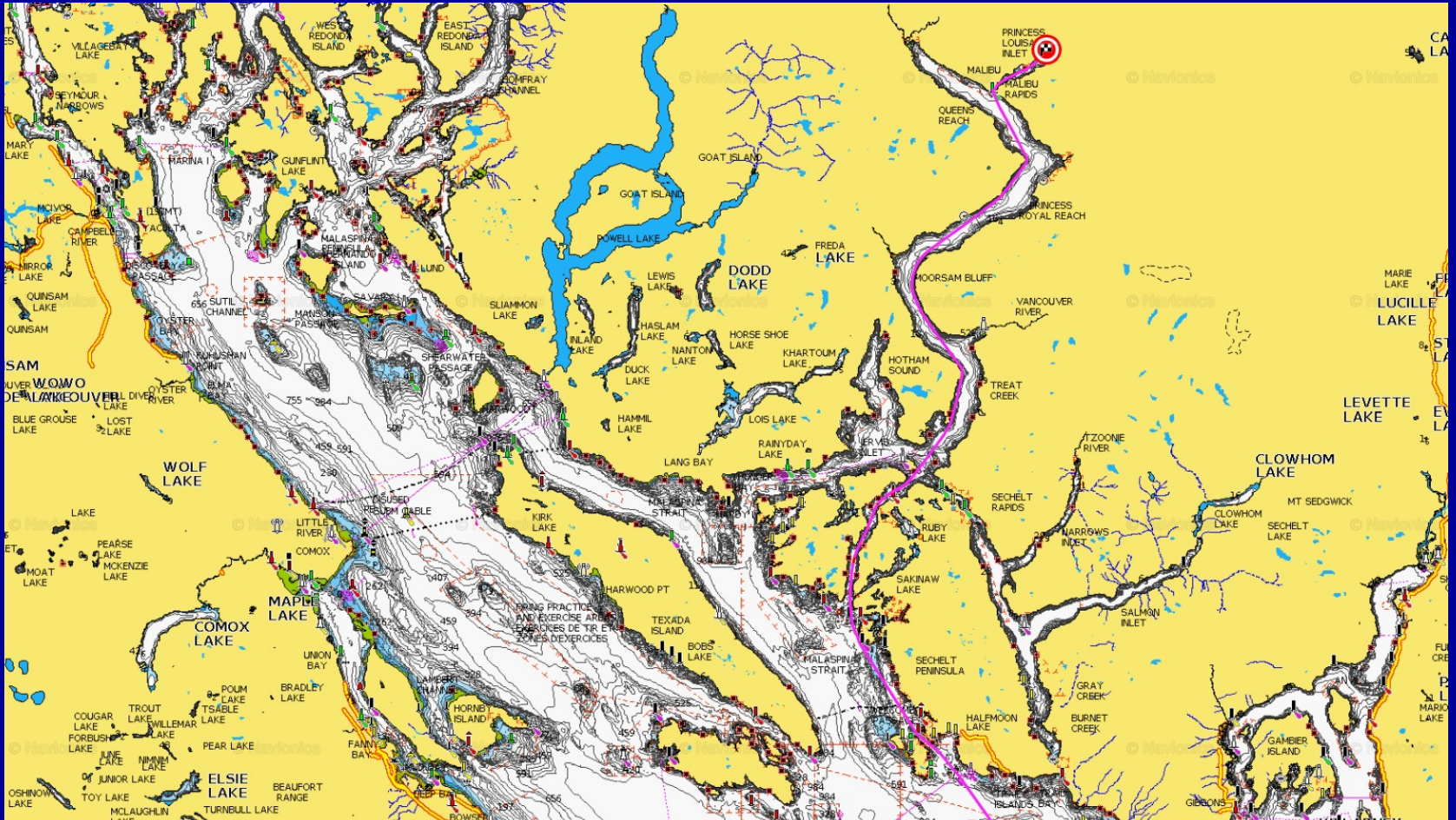
Leg 4



For Boaters, By Boaters™



Leg 5



For Boaters, By Boaters™



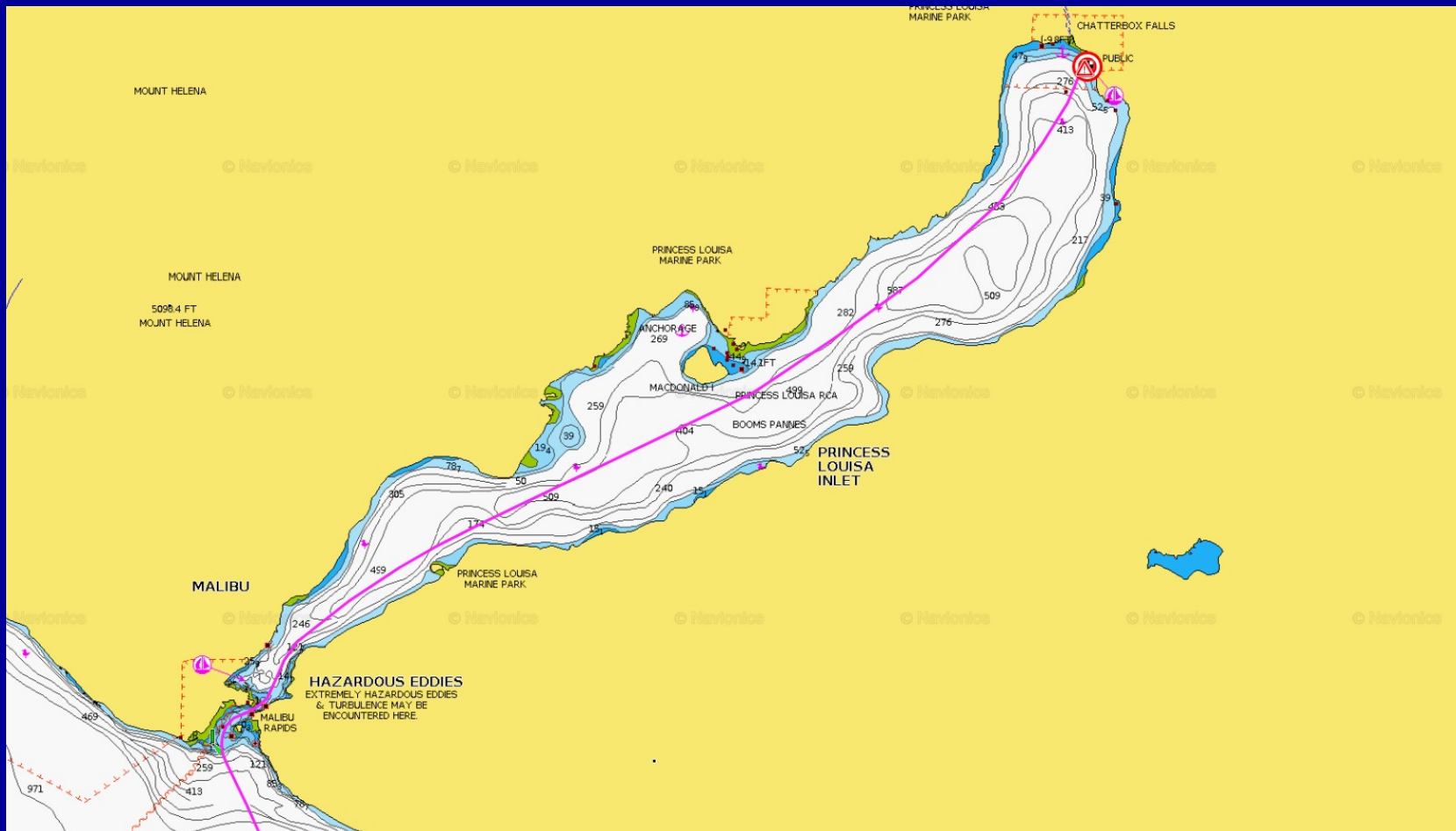
Malibu Rapids 1



For Boaters, By Boaters™



Leg 6



For Boaters, By Boaters™



For Boaters, By Boaters™



Dock at Chatterbox Falls



For Boaters, By Boaters™



For Boaters, By Boaters™



Chatterbox Falls



For Boaters, By Boaters™



Dock at Chatterbox 1



For Boaters, By Boaters™



Dock at Chatterbox 2



For Boaters, By Boaters™



For Boaters, By Boaters™



For Boaters, By Boaters™



Homework!

During the next couple of weeks..

Go to Navionics online app (FREE)

Plan a course from Oak Harbor to Princess Louisa Inlet.

Print the screen and be prepared to discuss the reason you might prefer your route over another.

If you have questions, email me. Bring your printed chart next meeting.

For Boaters, By Boaters™



USCG Required Equipment

WASHINGTON REQUIRED EQUIPMENT CHECKLIST

	PWCs	Boats Less Than 16'	Boats 16' to Less Than 26'	Boats 26' to Less Than 40'	Boats 40' to Less Than 65'	Human Powered: Any Length
	Class A	Class 1	Class 2	Class 3		
Vessel Registration On Board	yes	yes ⑥	yes	yes	yes	no
Registration Decals Displayed	yes	yes ⑥	yes	yes	yes	no
Registration Numbers Displayed	yes	yes ⑥	yes	yes ⑦	yes ⑦	no
Boater Education Card (power- driven boats over 15 hp)	yes ②	yes	yes	yes	yes	no
PFD: Type I, II, III, or V (one per person)	yes ①	yes ②	yes ③	yes	yes	yes
PFD: Type IV	no	no	yes	yes	yes	no
Type B-I Fire Extinguisher (power-driven boats only)	yes	yes	yes	yes ⑧	yes ⑧	no
Ignition Safety Switch	yes	no	no	no	no	no
Backfire Flame Arrestor ⑨	yes	yes	yes	yes	yes	no
Ventilation System	yes	yes	yes	yes	yes	no
Muffler	yes	yes	yes	yes	yes	no
Horn, Whistle, or Bell	yes	yes	yes	yes	yes	yes
Skier-Down Flag ④	yes	yes	yes	yes	yes	no
Daytime Visual Distress Signals ⑩	no	yes	yes	yes	yes	16' and over
Nighttime Visual Distress Signals ⑪	n/a	yes	yes	yes	yes	yes
Navigation Lights ⑤	n/a	yes	yes	yes	yes	at least one lantern or flash- light
CO Warning Sticker	no	yes	yes	yes	yes	no

yes = required by state
no = not required by state
n/a = not applicable

- ① Those on personal watercraft must wear a life jacket (personal flotation device) at all times.
- ② Children 12 years and younger are required to wear U.S. Coast Guard-approved life jackets in Washington State on boats shorter than 19 feet whenever the vessel is underway or when they're on an open deck or open cockpit on any waters of the state.
- ③ Required on all gasoline engines except outboard engines.
- ④ Required to be carried on board when towing person(s) on water skis or similar devices and displayed whenever the towed person(s) is preparing to ski or has fallen into the water.
- ⑤ Vessels must display the proper navigation lights between the hours of sunset and sunrise and during periods of restricted visibility such as fog or heavy rain.
- ⑥ Applies to all motorboats and all sailboat 16 feet in length or longer with the exception of a motorboat less than 16 feet in length with a motor of 10 horsepower or less and used on non-federal waters only.
- ⑦ State registration numbers are not displayed on boats documented with USCG under the Federal Registration System, but display of valid registration decals is required.
- ⑧ Boats 26 feet up to 40 feet long must carry two B-I or one B-II; boats 40 feet up to 65 feet long must carry three B-I or one B-II and one B-L.
- ⑨ See pages 46-47 for boater education card requirements.
- ⑩ VDSs are required on coastal waters, the Strait of Juan de Fuca east to Puget Sound, and the Puget Sound/San Juan Island area (except as noted on page 68).

A sample float plan is available online at
www.boat-ed.com/washington/handbook/pdf/floatplan.pdf

Copyright © 2012 Boat Ed, www.boat-ed.com

For Boaters, By Boaters™